

APPENDICES

APPENDIX 1.1

(Referred to in paragraph 1.4.1)

Statement showing year-wise position of inspection reports and paragraphs pending settlement

Sl. No.	Name of the Department	Upto 2010-11		2011-12		2012-13		2013-14		2014-15		2015-16		Total	
		IR	Para	IR	Para	IR	Para	IR	Para	IR	Para	IR	Para	IR	Para
1	Agriculture	1	1	-	-	1	6	-	-	1	3	-	-	3	10
2	Animal Husbandry and Veterinary Services	1	1	-	-	-	-	-	-	-	-	-	-	1	1
3	Archives, Archaeology and Museum	1	8	-	-	-	-	-	-	-	-	-	-	1	8
4	Art and Culture	3	4	-	-	1	2	3	16	-	-	-	-	7	22
5	Civil Supplies	-	-	-	-	-	-	-	-	-	-	1	3	1	3
6	Commercial Taxes	-	-	-	-	2	5	-	-	-	-	1	1	3	6
7	Co-operation	3	12	-	-	-	-	-	-	-	-	1	3	4	15
8	Education	8	28	1	3	2	3	5	13	2	7	1	4	19	58
9	Electoral office	-	-	-	-	-	-	1	1	1	1	-	-	2	2
10	Excise	-	-	-	-	1	3	-	-	-	-	-	-	1	3
11	Finance	-	-	-	-	-	-	-	-	4	8	4	5	8	13
12	Fisheries	-	-	1	2	-	-	1	3	-	-	-	-	2	5
13	Forests	3	9	1	1	2	10	-	-	2	8	-	-	8	28
14	General Administration	-	-	-	-	1	1	-	-	2	8	-	-	3	9
15	Housing	-	-	1	3	-	-	-	-	-	-	-	-	1	3
16	Health	2	4	4	8	3	10	10	24	2	4	5	20	26	70
17	Higher Education	2	2	-	-	-	-	1	1	-	-	-	-	3	3
18	Home	-	-	-	-	-	-	4	8	2	7	1	1	7	16
19	Information Technology	-	-	-	-	1	4	1	4	-	-	-	-	2	8

Audit Report for the year ended 31 March 2016

20	Information and Publicity	2	8	1	4	2	12	1	6	1s	5	-	-	7	35
21	Industries, Trade and Commerce	1	2	1	2	-	-	1	4	2	5	-	-	5	13
22	Irrigation	10	12	5	8	5	14	5	25	3	22	4	26	32	107
23	Labour	-	-	-	-	2	9	-	-	2	7	-	-	4	16
24	Law	2	2	-	-	-	-	3	5	2	4	8	14	15	25
25	Legislature	2	2	-	-	-	-	1	1	-	-	-	-	3	3
26	Official Language	-	-	-	-	-	-	-	-	-	-	1	1	1	1
27	Panchayati Raj	4	10	3	7	2	8	4	28	8	48	2	12	23	113
28	Printing and Stationary	-	-	-	-	-	-	1	1	1	1	-	-	2	2
29	Public Works	11	16	5	11	8	16	6	20	10	42	5	34	45	139
30	Revenue	13	28	-	-	1	12	2	6	1	5	1	8	18	59
31	Rural Development	1	2	-	-	1	1	-	-	-	-	1	5	3	8
32	Social Welfare	1	1	-	-	2	8	-	-	-	-	-	-	3	9
33	Sports and Youth Affairs	1	1	-	-	1	3	2	13	2	10	1	5	7	32
34	Technical Education	2	4	-	-	2	3	2	4	3	9	-	-	9	20
35	Transport	1	1	1	2	-	-	-	-	1	5	1	7	4	15
36	Town and Country Planning	-	-	-	-	1	1	-	-	2	2	1	3	4	6
37	Tourism	-	-	1	2	-	-	-	-	-	-	1	6	2	8
38	Urban Development	23	68	13	57	14	94	5	24	14	122	5	34	74	399
39	Vigilance	-	-	-	-	-	-	-	-	-	-	1	1	1	1
40	Women and Child Development	-	-	-	-	2	7	1	2	-	-	-	-	3	9
		98	226	38	110	57	232	60	209	68	333	46	193	367	1303

APPENDIX 1.2

(Referred to in paragraph 1.4.3)

Statement showing number of paragraphs/reviews in respect of which Government explanatory memoranda had not been received

Sl. No.	Name of Department	2011-12	2012-13	2013-14	2014-15	Total
(1)	(2)	(3)	(4)	(5)	(6)	(7)
1	Transport	-	-	-	1	1
2	Labour and Employment	-	-	-	1	1
3	Education	-	-	-	1	1
4	Health Department	-	-	3	1	4
5	Finance	-	1	-	-	1
6	Tourism	1	1	-	1	3
7	Public Works	-	4	-	2	6
8	Urban Development	2	-	1	-	3
9	Rural Development	1	-	-	-	1
10	Women and Child Development	-	1	1	-	2
11	Information Technology	-	-	1	-	1
12	Sports and Youth Affairs	-	-	2	-	2
Total		4	7	8	7	26

Note: Audit Report of 2014-15 was tabled in the State Assembly on 11.08.2016

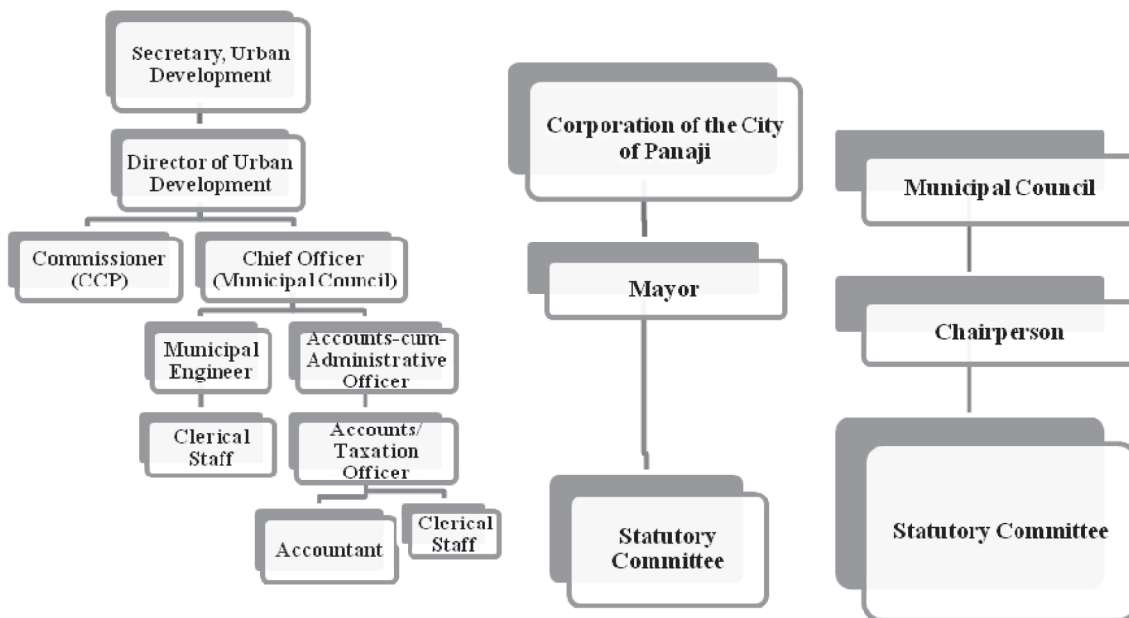
APPENDIX 1.3

(Referred to in paragraph 1.5.2)

Organogram of ULBs in Goa

EXECUTIVE LEVEL

ELECTED MEMBER LEVEL



APPENDIX 1.4

(Referred to in paragraph 1.5.7.2)

Statement showing short-recovery of property tax during 2011-16

	CCP	Margao MC	Mormugao MC	Mapusa MC	Ponda MC	Bicholim MC	Sanquelim MC
Category of ULB	‘A’			‘B’			‘C’
Basis of assessment of tax	Plinth-area rate		Flat rate				
Calculation for assessment of tax (minimum assessable)	([Plinth-area rate x Area] x FRR] – 10%) x 10%		([Flat rate x Area] x 12] – 10%) x 8%				{Flat rate x Area} x 12] – 10%) x 6%
No. of new properties added during 2011-16:							
<i>Residential</i>	1107	4230	540	277	919	172	474
<i>Commercial</i>	624	1149	226	75	641	36	124
Rateable value or rate of tax assessed (revised) (₹/ m ²):							
<i>Residential</i>	9000	2000	5 (14)	4.40	5	5 (8)	5
<i>Commercial</i>	9000	2800	12 (24)	17.70	15	15 (20)	10
Tax assessed (₹ in lakh):							
<i>Residential</i>	78.56	49.42	5.48	7.35	3.96	2.29	1.71
<i>Commercial</i>	191.16	13.88	3.10	75.25	3.53	1.24	0.58
Assessable rateable value (₹/ m ²):							
<i>Residential</i>	9000/ 9500						
<i>Commercial</i>	11,000						
Tax assessable (₹ in lakh):							
<i>Residential</i>	159.94	369.91	44.98	111.51	71.00	36.13	24.05
<i>Commercial</i>	478.64	70.65	16.34	125.87	23.29	6.39	3.40
Difference in assessment (₹ in lakh):							
<i>Residential</i>	81.38	320.49	39.50	104.16	67.04	33.84	22.34
<i>Commercial</i>	287.48	56.77	13.24	100.62	19.76	5.15	2.82
Short-recovery of tax (₹ in lakh)	368.86	377.26	52.74	204.78	86.80	38.99	25.16
No. of years since last revision in tax rates (year when last revised)	3 (2013)	19 (1997)	14 (2014)	2 (2014)	19 (1997)	18 (1997)	9 (2007)

(Source: ULB records)

Notes:

- 1) In CCP, the product of plinth-area rate and area of property is multiplied by Fair Rent Rate (FRR) of 12 per cent (as per Goa Buildings (Lease, Rent & Eviction) Control Act, 1968) to arrive at the Rateable Value, which is then multiplied by a Zone Multiplier Factor (depending on the zone in which the property is located) and 10 per cent is deducted from the product (towards allowance for repairs, etc.). The property tax is computed at the minimum prescribed rate (10 per cent) on this value
- 2) Margao MC followed a similar method as CCP for assessing property tax (based on plinth-area rates notified by PWD in 1983) but did not demarcate properties into zones and, hence, no Zone Multiplier Factor is applied in calculating property value
- 3) Figures in parenthesis denote revision in tax rates

APPENDIX 3.1

(Referred to in paragraph 3.1.11)

Statement showing investments made by State Government in PSUs whose accounts were in arrears as on 30 September 2016
(₹ in lakh)

Sl. No.	Name of PSUs	Year upto which Accounts finalised	Paid up capital as per latest finalised accounts	Investment made by State Government during the years for which accounts are in arrears				
				Year	Equity	Loans	Grants	Subsidy
1	2	3	4	5	6	7	8	9
A	Working Companies							
1	Goa Meat Complex Limited (GMCL)	2014-15	61.82	2015-16	-	-	453.00	-
2	Goa State Horticultural Corporation Limited (GSHCL)	2011-12	499.5	2012-13	-	-	-	1774.33
				2013-14	-	-	-	1878.77
				2014-15	-	-	-	2265.74
				2015-16	-	-	-	2832.52
				2006-07	5.00	-	-	-
3	Goa State Scheduled Castes and Other Backward Class Finance and Development Corporation Limited (GSSCOBFDCL)	2005-06	332.88	2007-08	5.00	-	-	-
				2008-09	1.66	-	25.00	-
				2009-10	1.66	-	25.00	-
				2010-11	5.00	-	25.00	-
				2011-12	250.00	-	30.00	-
				2012-13	166.00	438.93	10.00	-
				2013-14	-	258.00	50.00	-
				2014-15	-	168.07	-	-
2015-16	-	155.12	50.00	-				
4	Goa State Scheduled Tribes Finance and Development Corporation Limited (GSSTFDCL)	2014-15	4050.00	2015-16	-	-	50.00	-
5	Goa State Infrastructure Development Corporation Limited (GSIDCL)	2014-15	372.00	2015-16	-	-	19000.00	-

6	Info Tech Corporation of Goa Limited (ITCGL)	2008-09		2009-10 To 2011-12	-	-	-	-
				2012-13	-	114.46	-	-
				2013-14	-	500.00	-	-
				2014-15	-	880.00	-	-
			1633.47	2015-16	-	2400.00	-	-
7	Sewage and Infrastructural Development Corporation Limited (SIDCL)	2014-15	755.00	2015-16	-	8165.00	-	-
8	Goa Forest Development Corporation Limited (GFDC)	2013-14	268.91	2014-15	-	50.00	-	-
				2015-16	-	674.02	-	-
9	Economic Development Corporation Limited	2014-15	10092.50	2015-16	-	-	-	-
A	Non-Working Companies							
10	Goa Auto Accessories Limited (GAAL)	2014-15	559.00	2015-16				
B	Working Corporation							
11	Goa Industrial Development Corporation (GIDC)	2014-15	4716.93	2015-16	-	-	-	-
C	Non-Working Corporation							
				2006-07	25.00	-	-	-
				2007-08	-	-	-	-
				2008-09	-	-	-	-
				2009-10	-	-	-	-
				2010-11	-	1.10	-	-
				2011-12	-	-	-	-
				2012-13	-	-	-	-
				2013-14	-	-	-	-
				2014-15	-	-	-	-
				2015-16	-	-	-	-
			23342.01		459.32	1020.12	32502.58	8751.36
	Total							

APPENDIX 3.2

(Referred to in paragraph 3.1.15)

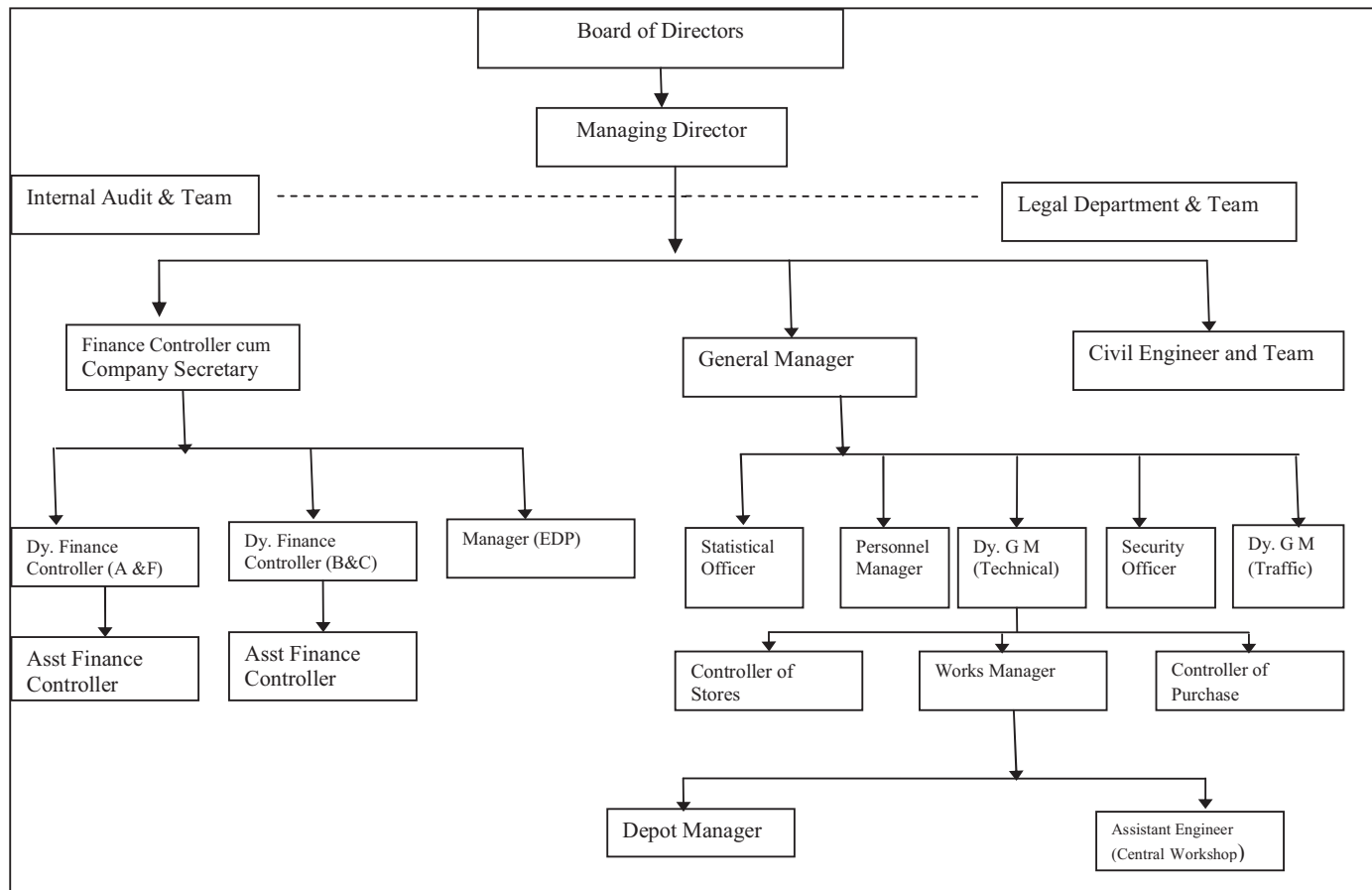
**Summarised financial position and working results of Government Companies and Statutory Corporations as per their latest finalised financial statements/accounts
(Figures in columns 5 to 12 are ₹ in crore)**

Sl. No.	Sector/Name of the Company	Period of accounts	Year in which accounts finalised	Paid-up capital	Loans outstanding at the end of year of year	Accumulated profit (+)/loss (-)	Turnover	Net profit (+)/loss (-)	Net impact of Audit comments	Capital employed	Return on capital employed	Percentage of return on capital employed	Man power
(1)	(2)	(3)	(4)	(5)	(6)	(7)	(8)	(9)	(10)	(11)	(12)	(13)	(14)
	A. Working Companies												
	AGRICULTURE AND ALLIEED												
1.	Goa Forest Development Corporation Limited (GFDCL)	2013-14	2015-16	2.69	0.00	1.13	5.03	-0.02	Accounts to be revised	15.47	-0.02	-0.13	77
2.	Goa Meat Complex Limited (GMCL)	2014-15	2016-17	0.62	0.00	0.57	3.91	-0.11	Comments issued	5.55	-0.11	-2.0	68
3.	Goa State Horticultural Corporation Limited (GSHCL)	2011-12	2016-17	5.00	1.24	-1.16	48.42	0.25	Nil Comments issued	5.08	0.25	4.92	23
	Sector wise total (A)			8.31	1.24	0.54	57.36	0.12		26.1	0.12	0.46	168
	FINANCE												
4.	EDC Limited (EDCL)	2014-15	2015-16	100.92	61.75	151.01	87.75	36.11	Comments issued	426.84	42.46	9.95	88
5.	Goa Handicraft, Rural and Small Scale Industries Development Corporation Limited (GHRSSIDCL)	2015-16	2016-17	8.00	0.00	-9.81	10.61	-0.86	Under process	-1.81	-0.86	-47.51	64
6.	Goa State Scheduled Castes and Other Backward Class Finance and Development Corporation Limited (GSSCOBCFDCL)	2005-06	2016-17	3.33	2.68	-1.08	0.44	-0.41	Nil Comments issued	5.11	-0.3	-5.87	15
7.	Goa State Scheduled Tribes Finance and Development Corporation Limited (GSSTFDCL)	2014-15	2015-16	40.00	0.44	0.10	1.81	0.12	Nil Comments issued	41.37	0.13	0.31	20
	Sector wise total (B)			152.25	64.87	140.22	100.61	34.96		471.51	41.43	8.79	187
	INFRASTRUCTURE												
8.	Goa State Infrastructure Development Corporation Limited (GSIDCL)	2014-15	2016-17	3.72	232.38	21.4	484.22	7.13	Comments issued	257.5	30.8	11.96	96

Sl. No.	Sector/Name of the Company	Period of accounts	Year in which accounts finalised	Paid-up capital	Loans outstanding at the end of year of year	Accumulated profit (+)/loss (-)	Turnover	Net profit (+)/loss (-)	Net impact of Audit comments	Capital employed	Return on capital employed	Percentage of return on capital employed	Man power
(1)	(2)	(3)	(4)	(5)	(6)	(7)	(8)	(9)	(10)	(11)	(12)	(13)	(14)
9.	Info Tech Corporation of Goa Limited (ITCGL)	2008-09	2015-16	16.33	0.00	1.13	51.26	2.01	NRC issued	17.46	2.01	11.5	47
10.	Sewage and Infrastructural Development Corporation Limited (SIDCL)	2014-15	2016-17	7.55	12.00	10.58	4.59	1.51	Under finalisation	30.13	1.54	5.11	23
	Sector wise total (C)			27.60	244.38	33.11	540.07	10.65		305.09	34.35	11.26	166
	SERVICE												
11.	Goa Electronics Limited (GEL)	2015-16	2016-17	1.8	0.00	-21.7	12.55	0.15	NRC issued	-19.9	0.15	0.75	9
12.	Goa Tourism Development Corporation Limited (GTDCL)	2015-16	2016-17	22.65	2.6	-6.45	28.53	1.09	Under finalisation	18.8	1.09	5.80	311
13.	Kadamba Transport Corporation Limited (KTCL)	2015-16	2016-17	94.64	34.41	-198.23	168.54	5.2	Under finalisation	-5.02	9.91	-197.4	2003
	Sector wise total (D)			119.09	37.01	-226.38	209.62	6.44	-	-6.12	11.15	-182.19	2323
	B. Working Corporation												
	INFRASTRUCTURE												
14.	Goa Industrial Development Corporation (GIDC)	2014-15	216-17	47.17	0.00	56.12	31.62	0.68	Under finalisation	103.29	0.68	0.66	198
	Sector wise total (E)			47.17	0.00	56.12	31.62	0.68	Under finalisation	103.29	0.68	0.66	198
	C. Non-working Companies												
	MANUFACTURING												
15.	Goa Auto Accessories Limited (GAAL)	2014-15	2015-16	5.59	0.00	-16.99	1.10	-0.78	NRC issued	-8.92	-0.14	1.57	5
	Sector wise total (F)			5.59	0.00	-16.99	1.10	-0.78		-8.92	-0.14	1.57	5
	D. Non-working Corporation												
	INFRASTRUCTURE												
16.	Goa Information Technology Development Corporation (GITDC)	First account awaited	0	0.00	0.00	0	0	0	0.00	0.00	0.00		
	Sector wise total (G)			0.00	0.00	0.00	0.00	0.00	0.00	0.00	0.00	0.00	0.00
	Grand Total (A+B+C+D+E+F+G)			360.01	347.50	-13.38	940.38	52.07		890.95	87.59		3047

APPENDIX 3.3
(Referred to in paragraph 3.2.2)

Organisation chart of KTCL



APPENDIX 3.4

(Referred to in paragraph 3.2.7.1)

Statement showing the operational performance of the Company for the years 2011-16

Sl. No.	Description	2011-12	2012-13	2013-14	2014-15	2015-16
1	Average Number of buses held during the year	442	440	547	559	565
2	Average number of buses on road	276	276	313	361	361
3	Percentage of utilisation of buses (<i>per cent</i>)	65.09	62.73	57.22	64.58	63.89
4	Average number of employees during the year	1873	1868	1949	2056	2046
5	Employee bus ratio (4/2)	6.79	6.77	6.23	5.70	5.67
6	Average number of schedules operated at the end of the year	256	253	277	302	296
	Employee to Schedule ratio	7.31	7.38	7.04	6.8	6.91
7	Schedule kilometre	362.17	351.43	367.72	386.34	366.30
8	Kilometre operated					
	Gross	27446863	25877716	29226555	31345969	31274898
	Effective	27195813	25563996	28604549	30997377	30936971
	Dead	251050	313720	622006	348592	337927
9	Percentage of dead kilometre to gross kilometre	0.91	1.21	2.13	1.11	1.08
10	Average kilometre covered per bus per day	269.96	253.76	250.38	235.25	234.79
11	Average traffic revenue per Kilometre (₹)	22.44	22.96	26.36	27.25	28.2
12	Number of operating depots	4	4	4	4	4
13	Average number of breakdown per ten thousand Kilometre	0.32	0.34	0.27	0.34	0.30
14	Average number of accidents per lakh Kilometre	0.28	0.33	0.21	0.24	0.23
15	Passenger kilometre operated (in crore)	82.91	79.77	86.08	94.68	97.86
16	Occupancy ratio (Load factor)	44.84%	52.89%	51.00%	53.59%	55.50%